

# Studying in Switzerland 2015

## **3 Why Study in Switzerland?**

## **4 Facts and Figures**

## **6 Studying in Switzerland**

6 Swiss Higher Education

10 Practical Details

## **25 Degree Programmes**

26 Doctoral/Research Universities

36 Universities of Applied Sciences and Arts

42 Universities of Teacher Education

## **46 Universities**

46 Doctoral/Research Universities

50 Universities of Applied Sciences and Arts

53 Universities of Teacher Education

## **59 Educational Bodies**

## Abbreviations

The University of Applied Sciences in Switzerland

D/RU	Doctoral/Research Universities
BE	Universität Bern
BS	Universität Basel
EPFL	Ecole polytechnique fédérale de Lausanne
ETHZ	Eidgenössische Technische Hochschule Zürich
FR	Universität Freiburg <p>Université de Fribourg</p>
GE	Université de Genève
LA	Université de Lausanne
LU	Universität Luzern
NE	Université de Neuchâtel
SG	Universität St. Gallen
USI	Università della Svizzera italiana
ZH	Universität Zürich

The University of Applied Sciences in Switzerland

UAS	Universities of Applied Sciences and Arts
BFH	Berner Fachhochschule
FH KAL	Kalaidos Fachhochschule Schweiz
FHNW	Fachhochschule Nordwestschweiz
FHO	Fachhochschule Ostschweiz
HES-SO	Haute Ecole Spécialisée de Suisse occidentale
HSLU	Hochschule Luzern
SUPSI	Scuola universitaria professionale della Svizzera italiana
ZFH	Zürcher Fachhochschule

The University of Applied Sciences in Switzerland

UTE	Universities of Teacher Education
EHB/IFFP/	Eidgenössisches Hochschulinstitut für Berufsbildung/Institut fédéral des
IUFFP/	hautes études en formation professionnelle/
SFIVET	Istituto universitario federale per la formazione professionale/Swiss Federal Institute for Vocational Education and Training
EHSM/HEFSM/	Eidgenössische Hochschule für Sport Magglingen/Haute école fédérale de
SUFSM	sport de Macolin/Scuola universitaria federale dello sport di Macolin
HEP	Haute école pédagogique-BEJUNE
BEJUNE	
HEP	Haute école pédagogique du
Vaud	canton de Vaud

The University of Applied Sciences in Switzerland

HfH	Interkantonale Hochschule für Heilpädagogik Zürich
PH	Pädagogische Hochschule der
FHNW	Fachhochschule Nordwestschweiz
PH FR/HEP FR	Haute école pédagogique Fribourg, Pädagogische Hochschule Freiburg
PHLU	Pädagogische Hochschule Luzern
PH VS/HEP VS	Pädagogische Hochschule Wallis/ Haute école pédagogique du Valais
PH Zug	Pädagogische Hochschule Zug
PHZH	Pädagogische Hochschule Zürich
PHBern	PHBern, deutschsprachige Pädagogische Hochschule
PHGR/ASPGR/	Pädagogische Hochschule Graubünden/Alta scuola pedagogica dei Grigioni/
SAPGR	Scola auta da pedagogia dal Grischun
PHSG	Pädagogische Hochschule St. Gallen
PHSH	Pädagogische Hochschule Schaffhausen
PHSZ	Pädagogische Hochschule Schwyz
PHTG	Pädagogische Hochschule Thurgau
SUPSI-DFA	Scuola universitaria professionale della Svizzera italiana, Dipartimento formazione e apprendimento
Uni FR/LDS I & LDM	Universität Freiburg, Département Erziehungswissenschaften/Université de Fribourg, département de la formation d’enseignantes et d’enseignants
UNIGE/IUFE	Institut Universitaire de Formation des Enseignants (Uni GE IUFE)

The University of Applied Sciences in Switzerland

	Degree programmes
B	Bachelor’s degree
M	Master’s degree
SM	Specialized Master’s degree
T	Teaching Diploma
1	Only the first academic year
2	Only the first two academic years
(pt)	part-time
(ft)	full-time

The University of Applied Sciences in Switzerland

	Tuition languages
G	German
F	French
I	Italian
RM	Rhaeto-Romance

### Imprint

The University of Applied Sciences in Switzerland

<b>Published by:</b>	swissuniversities, Bern
<b>Editors:</b>	Tiziana Tafani, Marie-Josée Galliker, Nicola Jucker, Aude Pacton
<b>Design:</b>	Eclat AG, Erlenbach/Zürich
<b>Printing:</b>	Druckerei Glauser, Fraubrunnen
<b>Print run:</b>	6000 EN
<b>Edition:</b>	April 2015 (2nd Edition)

The University of Applied Sciences in Switzerland

The University of Applied Sciences in Switzerland

<b>Pictures provided by</b>	
-----------------------------	--

The University of Applied Sciences in Switzerland

<b>Page 17:</b>	University of Applied Sciences and Arts Northwestern Switzerland FHNW
<b>Page 18:</b>	ETH Zurich
<b>Page 19:</b>	PH Luzern, University of Teacher Education
<b>Page 20:</b>	University of Bern, communication departement
<b>Page 21, 24:</b>	University of Geneva
<b>Page 22:</b>	Institut Fédéral des Hautes Études en Formation Professionnelle IFFP
<b>Page 23:</b>	Zurich University of Applied Sciences ZHAW

## Why Study in Switzerland?

*Switzerland is an excellent location for living, studying, and working. Its cultural variety, beautiful landscape, and innovative environment offer first-class surroundings for both personal well-being and career advancement.*

*Switzerland is one of the most competitive countries in the world and widely recognised internationally as a centre of excellence in education, research, and innovation. Great emphasis is placed on ensuring the autonomy of Swiss universities and researchers, on fostering competition and quality, and on encouraging a broad-minded outlook.*

*Switzerland's high-quality education system and its multicultural society mean that a large part of the population is fluent in several languages. English is widely spoken and used as a language of business, higher education, and research.*

*Switzerland's small size has favoured the emergence of well-developed research and development networks, whose expertise is continuously implemented in the economy and society. At the same time, Switzerland is part of the global community and maintains a worldwide network of cooperations and partnerships in education and science.*

*Common to the country's richly diverse higher education system is a drive for uncompromising quality in teaching and research. Swiss universities play an active role in shaping the future with the necessary responsibility. So be a part of this quality!*

**Welcome to Swiss universities!**

# Facts and Figures<sup>1</sup>

Official Name  
**Switzerland/  
 Swiss Confederation**

Total Area  
 41 285 square kilometres. More than two thirds of the country's territory are occupied by the Alps.



Location  
 Switzerland is situated in the heart of Europe and borders on France, Germany, Austria, the Principality of Liechtenstein (FL), and Italy

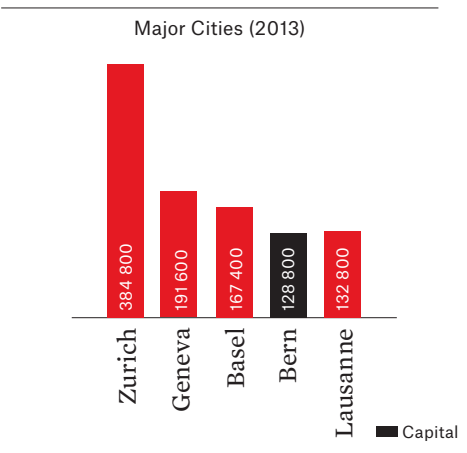


Time Zone  
**CET (UTC+1)**

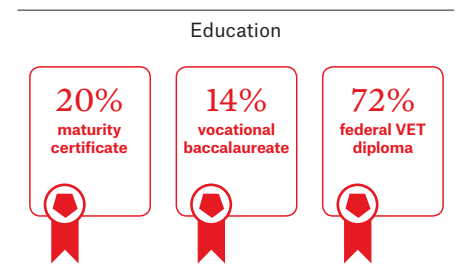
Currency (February 2015)  
**Swiss franc (CHF)**  
**1 CHF = 1.11 \$**  
**1 CHF = 0.97 €**

Population (2013)  
**8.14 million**

Including approximately 24% resident foreigners. More than two-thirds of the population live in urban areas.

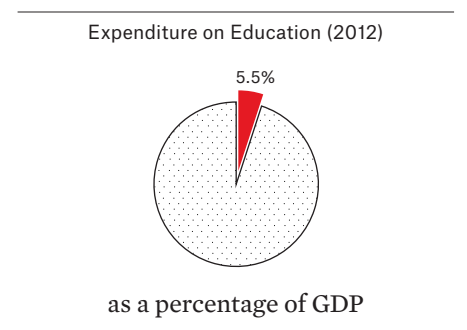


Languages (2012)  
**4**  
 65 % German (predominantly Swiss German), 22.5 % French, 8.5 % Italian, 0.5 % Romansh. English is widely spoken.

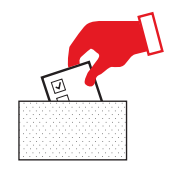


Universities  
**12<sup>a</sup> + 8<sup>b</sup> + 20<sup>c</sup>**  
<sup>a</sup> doctoral/research universities  
<sup>b</sup> universities of applied sciences and arts  
<sup>c</sup> universities of teacher education

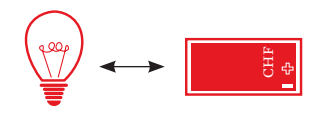
Students (2013)  
 229 400, including approximately 25% international students.



Political System  
 Switzerland is a federal, democratic state. Each of the 26 cantons has its own constitution, parliament, government, and judicial system.



Economy  
 The main sectors include microtechnology, high-tech, biotechnology and pharmaceuticals, banking and insurance, tourism and international organisations. The service sector employs the largest number of people. The country has a flexible job market and the unemployment rate is low.



International Organisations  
 Switzerland is home to various international organisations, including the second largest UN office (ILO, UNCTAD, UNHCR, WHO, etc.), the World Trade Organisation, the Red Cross, the World Economic Forum, and the International Olympic Committee.

<sup>1</sup> All statistical details provided in this brochure are from the Swiss Federal Statistical Office (<http://www.bfs.admin.ch>).

## Studying in Switzerland<sup>2</sup>

### Swiss Higher Education

Swiss higher education is divided into doctoral/research universities, universities of applied sciences and arts, and universities of teacher education.

Switzerland has 12 doctoral/research universities (10 cantonal universities and 2 federal institutes of technology), 8 universities of applied sciences and arts (including one private, state-recognised institution), 20 universities of teacher education (14 independent institutions, 2 integrated into universities of applied sciences, 2 integrated into cantonal universities, and 2 affiliated institutions), and several other state-funded university institutions.

In the 2013/14 autumn semester, over 229 400 students were matriculated at Swiss universities: of this total enrolment, 51% were female and approximately 25% were international students. 142 000 students were enrolled at universities, 68 900 at universities of applied sciences and arts, and 18 000 at universities of teacher education.

The three types of university are each represented in German-, French-, and Italian-speaking Switzerland. Please refer to page 26 ff for details on programme availability, campus locations, and tuition languages.

#### **Doctoral/Research Universities – Universities of Applied Sciences and Arts/Universities of Teacher Education: Basic Research – Practice Orientation**

The educational remit of Switzerland's doctoral/research universities is to offer degree programmes on a high scientific and theory based level and to undertake basic research. The remit of the universities of applied sciences and arts and the universities of teacher education is to provide scientific and professional education, to conduct applied research, and to promote cooperation with practice and industry.

Many degree programmes are offered only at doctoral/research universities, such as all humanities degrees, many science degrees, and some engineering degrees. Some degree programmes, such as landscape architecture and various health sciences, are available only at universities of applied sciences and arts. The same applies to degrees in music, theatre, film, art, and design. Universities of teacher education offer practiceori-

ented training in various subject areas such as pre-primary education, primary education, secondary education I and II, etc.

#### **Degree Levels**

Since 2006, all Swiss universities have been offering their degree courses in accordance with the Bologna system. They have adopted the European Credit Transfer System (ECTS), which aims to foster student mobility by ensuring the recognition of credits obtained elsewhere. The [nqf.ch](http://nqf.ch)-HS<sup>3</sup> qualifications framework defines and describes Swiss higher education levels and the qualifications offered with a view to enhancing national and international comparability.

The first-level degree awarded is the **Bachelor's**. The standard duration of a full-time Bachelor's degree course is three years (180 ECTS credits).

The second-level degree awarded is the **Master's**. Students seeking admission to a Master's programme must hold a Bachelor's degree. Master's programmes deepen first-degree knowledge and enable students either to specialise in a particular field or to acquire interdisciplinary training. Master's programmes usually last three to four semesters and are awarded 90 to 120 ECTS credits.

**The Doctorate or PhD** is the highest academic degree awarded under the Bologna system. Candidates seeking admission to doctoral studies must hold a Master's degree from a doctoral/research university. Candidates able to demonstrate proven scientific qualifications may also pursue doctoral studies with a Master's degree from other types of higher education institutions. Research doctorate degrees are generally awarded after 3–5 years of postgraduate research and the submission of a written thesis. Doctoral degrees are awarded by the 10 cantonal universities and the 2 federal institutes of technology.

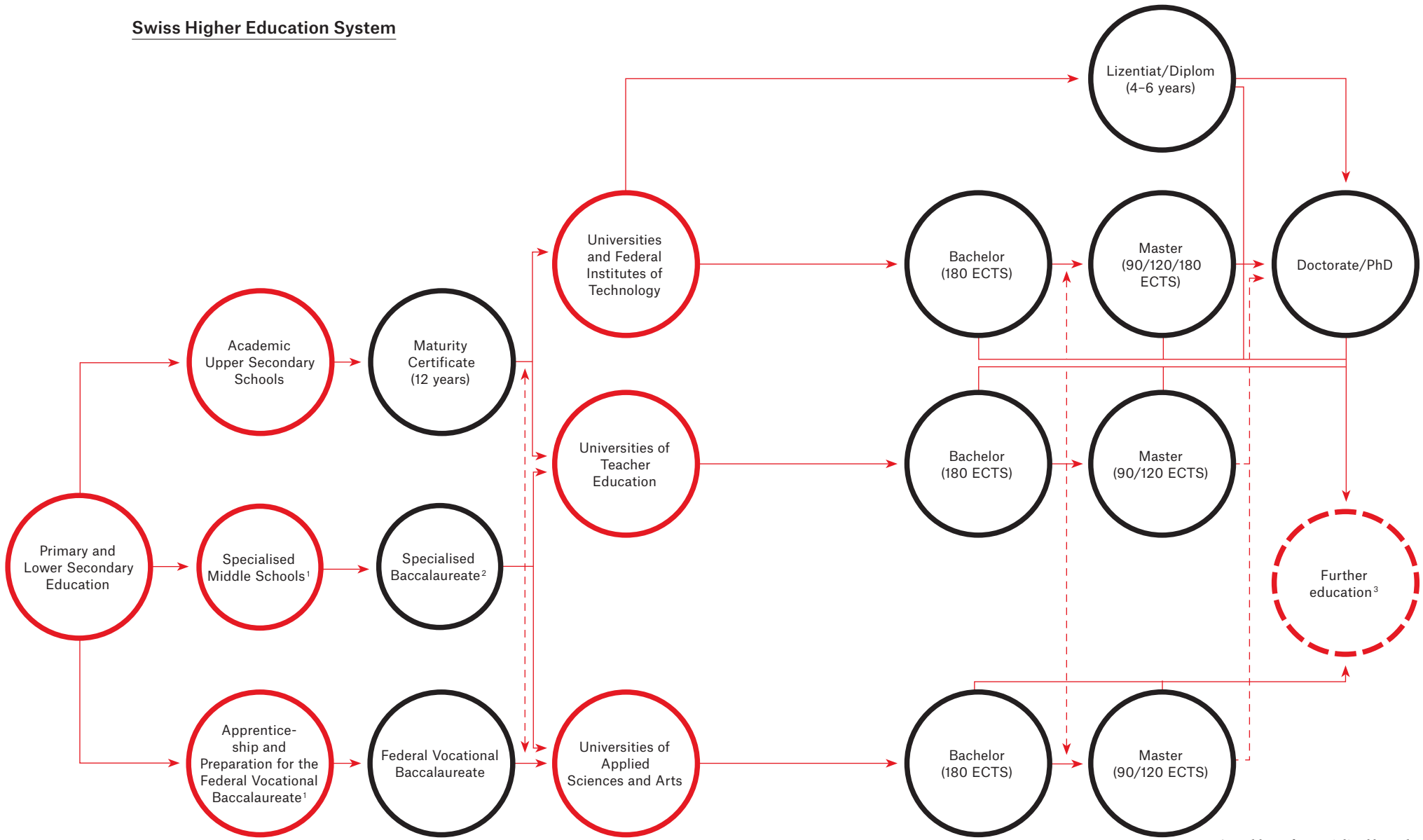
#### **Further Education at Tertiary-Level-A**

Swiss universities also offer Master of Advanced Studies (MAS) degrees (minimum 60 ECTS credits or one-year of full-time study). The MAS degree does not grant admission to doctoral degree programmes. Admission to MAS programmes usually requires an academic degree (from a doctoral/research university, a university of applied sciences and arts, or a university of teacher education).

<sup>2</sup> A part of this section is based on the brochure «Studieren in der Schweiz» (SDBB)

<sup>3</sup> [www.qualifikationsrahmen.ch](http://www.qualifikationsrahmen.ch)

# Swiss Higher Education System



Primary and Lower Secondary Level

Upper Secondary Level

Tertiary Level

— Normal path

- - Additional achievement required

<sup>1</sup> Graduates of these schools may access UTE pre-school and primary school teacher training courses subject to passing an additional examination to obtain a certificate equivalent to a specialised baccalaureate with a pedagogic orientation.

<sup>2</sup> Holders of a specialised baccalaureate may access some UAS Bachelor's programmes under certain predefined conditions. Candidates who hold a specialised baccalaureate with a pedagogical orientation may also be admitted to certain UTE courses (pre-school or primary school teacher training).

<sup>3</sup> Master of Advanced Studies (MAS) (≥ 60 ETCS)  
 Diploma of Advanced Studies (DAS) (≥ 30 ETCS)  
 Certificate of Advanced Studies (CAS) (≥ 10 ETCS)  
 Teaching Diploma for Academic Upper Secondary Schools (60 ETCS). Admission requires a Master's degree in one or two teaching disciplines.

## Practical Details

### Academic Calendar

*The Swiss academic year is divided into two semesters: the autumn semester runs from week 38 to week 51, the spring semester from week 8 to week 22.*

### Admission

Swiss universities have decision-making autonomy on student admission. Each university takes its admission decisions independently but in accordance with international agreements and with a legally binding outcome regarding the recognition of educational qualifications.

### **Doctoral/Research Universities**

#### • Bachelor's Degrees

Candidates seeking admission to Bachelor's programmes at doctoral/research universities must hold a Swiss maturity certificate or an equivalent foreign upper secondary school-leaving certificate qualifying candidates for university entrance (general higher education entrance qualification).

Candidates holding a valid Swiss maturity certificate or an equivalent entrance qualification are as a rule eligible to enter all degree programmes. Exempt from this regulation are medical programmes (human medicine, dental medicine, and veterinary medicine), chiropractic medicine, human movement and sports sciences.

International students seeking admission to doctoral/research universities must provide evidence of an equivalent level of previous education. Other admission requirements include a command of the tuition language and the availability of a sufficient number of places on a course. Due to the limited number of places, international students are not admitted to degree programmes in medicine at Swiss universities, except in some special cases.

#### • Master's Degrees

Candidates seeking admission to Master's programmes at doctoral/research universities must hold either a Bachelor's degree in the same subject area from another doctoral/research university or an equivalent Bachelor's degree in the same subject from a university abroad. Admission may be subject to candidates having to satisfy specific requirements. Admission decisions for candidates holding a Bachelor's degree from another type of university are taken by each respective university.

In addition to a Bachelor's degree in the particular area of study, admission to specialised Master's programmes may be subject to other requirements as specified by each university.

### **Universities of Applied Sciences and Arts (UAS)**

#### • Bachelor's Degrees

Candidates seeking admission to Universities of Applied Sciences and Arts (UAS) must hold either a federal vocational baccalaureate or an equivalent upper secondary school-leaving certificate. Holders of a Swiss maturity certificate or an equivalent foreign certificate are eligible for UAS admission provided they have gained the required work experience relevant to the chosen area of study. Holders of a specialised baccalaureate may enter Bachelor's programmes related to their particular specialisation and/or under certain predefined conditions. Admission to music, theatre, and arts degrees requires no work experience but the positive assessment of individual artistic aptitude. Additional admission requirements may apply to certain programmes.

#### • Master's Degrees

Candidates seeking admission to a Master's programme must hold a Bachelor's degree. Each university reserves the right to consider foreign Bachelor's degrees valid or not for admission to its Master's programmes and to stipulate its own admission requirements (e.g., entrance examinations, further requirements, etc.).



## Universities of Teacher Education (UTE)

### • Bachelor's Degrees

According to the regulations of the Swiss Conference of Cantonal Directors of Education (EDK) and depending on the chosen programme, candidates seeking admission to a university of teacher education must have a Swiss maturity certificate, or an EDK-recognised teaching diploma, or a degree from a university of applied sciences (UAS).

Candidates holding a specialised baccalaureate (specialised maturity certificate) with an education option may also be admitted to certain programmes (e.g., teacher training for preschool and primary levels).

### • Master's Degrees

Candidates seeking admission to a teacher training course to teach at upper secondary level must hold a recognised Master's degree in one or two school subjects. Candidates seeking admission to a teacher training course in special needs education (early years or special needs education) must hold either a diploma for teaching standard classes, or a degree in speech therapy or in psychomotor therapy (at least to Bachelor's level), or a Bachelor's degree in a related area of study. The EDK regulations on the recognition of educational qualifications provide information about minimum admission requirements. Universities of teacher education (UTE) may impose additional admission requirements. Please refer to the UTE websites for more detailed information on admission requirements.

### Admission to MAS Programmes

Master of Advanced Studies programmes (MAS) are further education courses that should not be confused with standard Master's programmes. Candidates seeking admission to MAS programmes must as a rule hold an academic degree (from a university, a university of applied sciences, or a university of teacher education) and have gained practical experience in their chosen area of study.

### Admission to Doctoral Studies

Admission to doctoral studies lies in the autonomous responsibility of each doctoral/research university. Admission decisions are taken on the basis of individual aptitude and qualifications.

*Doctoral studies are designed on the basis of Master's programmes offered at doctoral/research universities.*

Candidates holding a Master's degree from another type of higher education institution and with proven scientific qualifications may also be admitted to doctoral studies.

### Admission Information

- University admission offices (see page 46 ff)
- Doctoral/research universities: [www.swissuniversities.ch](http://www.swissuniversities.ch) > Services > Admission to Universities
- Universities of Applied Sciences and Arts (UAS): State Secretariat for Education, Research and Innovation SERI ([www.sbf.admin.ch](http://www.sbf.admin.ch)) > Bachelorstudiengänge > Wer ist zugelassen)
- Universities of Teacher Education (UTE): [www.swissuniversities.ch](http://www.swissuniversities.ch) > Services > Admission to UTE

### Tuition Language

*Bachelor's programmes are usually taught in a national language (German, French, or Italian; some bilingual). Several universities offer specific programmes in English.*

All Swiss universities require a good knowledge of the language of instruction. Prospective Master's students are advised to have a good working knowledge of English since such degree programmes are being taught increasingly in English.

See details: [www.studyprogrammes.ch](http://www.studyprogrammes.ch)

### Application and Matriculation

Admission to the degree programmes offered at Swiss higher education institutions is subject to a compulsory admission procedure and binding application deadlines. There is a two-step application procedure: (1) Application submission by a filing deadline (most universities provide online application forms). Applicants indicate their chosen faculty and degree programme on the application form. Following timely filing, applicants will receive written confirmation of their application, an application fee invoice, and a list of supporting documents to be submitted. (2) Applicants send the requested documents to the university. As soon as their documents have been checked and upon receipt of payment of the application fee, applicants are sent formal confirmation of their matriculation.

Please refer to the respective university website for details about application and matriculation procedures.



University application deadline (doctoral/research universities): 30 April for autumn admissions. Spring admissions are restricted. For application deadlines and special provisions for medical studies, sports, sports sciences, translation, and nursing sciences, please refer to [www.swissuniversities.ch](http://www.swissuniversities.ch) > Higher education area > Studying in Switzerland > Information about studies > Anmeldefristen UH.

University of Applied Sciences (UAS) application deadlines vary. The UAS academic year begins in the autumn semester. Entrance to some programmes is also possible in the spring semester. Please refer to the UAS websites for application deadlines (p. 50-52).

University of Teacher Education (UTE) filling periods also differ from one institution to another (from December to May). The academic year generally begins in the autumn semester. Please refer to the UTE websites for further information about application deadlines (p. 53-58).

### ECTS and Degree Programme Duration

Students attending Swiss Universities are awarded European Credit Transfer System (ECTS) credits. This makes degree programmes comparable and facilitates access to degree programmes at home and abroad. Courses and lectures are awarded a certain number of credits. ECTS credits are awarded to students subject to adequate attendance and performance.

Swiss higher education has a three-cycle structure: (1) 180 ECTS credits for three years of full-time study leading to a Bachelor's degree. (2) 90 to 120 ECTS credits for one and a half to two years of full-time study leading to a Master's degree. (3) A doctoral degree is awarded in general after 3–5 years of postgraduate research and the submission of a written thesis.

### Tuition fees

*Semester fees at public universities vary between CHF 500 and CHF 2 000. International students are charged higher tuition fees at some universities. Private universities charge higher tuition fees.*

Compared to other countries, Swiss higher education tuition fees are moderate. Please refer to page 46 ff for details about university tuition fees. Depending on the university location, area of study, and personal needs, the estimated total cost for one academic year ranges between CHF 20 000 and CHF 30 000.

### Funding

To find out whether a Swiss university offers scholarships to international students, candidates are advised to consult the respective university website. The Swiss Government awards Excellence Scholarships to foreign scholars and artists holding a recognised university degree. Detailed information about offer and requirements is available on the website of the Federal Commission for Scholarships for Foreign Students (FCS)<sup>4</sup>.

### Working while studying

*While studying in Switzerland, international students are allowed to work a maximum of 15 hours a week. Full-time work is permitted during the semester holidays.*

Students must notify the responsible immigration authorities of any employment pursued during their stay in Switzerland. Students from non-EU/EFTA countries are allowed to pursue gainful employment only 6 months after starting their degree programme.

### Entry/Visa and Residence Permit

Different visa and residence permit regulations are applicable to EU/EFTA citizens and to citizens of other countries.

Students from EU/EFTA countries must register with the local Resident Registration Office within 14 days of arrival in Switzerland and are required to apply for a residence permit. The following supporting documents are usually required:

- completed residence permit application
- valid passport or identity card
- proof of university enrollment
- evidence of sufficient funds (e.g., certificate or certified document of a bank authorised in Switzerland)
- proof of address at place of residence
- 2 passport photographs

<sup>4</sup> Website: [www.sbf.admin.ch/themen/01366/01380/01828/index.html?lang=en](http://www.sbf.admin.ch/themen/01366/01380/01828/index.html?lang=en)

Students from all other countries must contact the Swiss embassy or consulate in their home country<sup>5</sup> and apply for a visa prior to entering Switzerland. The visa processing time is at least 8 weeks. If the responsible immigration or police authorities approve the application, applicants are deemed to have satisfied the requirements for entry into Switzerland and for taking up residence for the purpose of study.

Foreign nationals who are not EU/EFTA citizens and who do not require a visa should consult the Swiss embassy or consulate in their home country about current entry and residence requirements and formalities.

### Accommodation while studying

*Depending on the university location, finding accommodation can be difficult. Students are therefore advised to search for accommodation in good time prior to their arrival.*

Useful student accommodation links:

- [www.wgzimmer.ch](http://www.wgzimmer.ch)
- [www.students.ch/wohnen](http://www.students.ch/wohnen)
- [www.swissuniversities.ch](http://www.swissuniversities.ch) > Higher education area > Studying in Switzerland > Information about studies > Apartments

### Health Insurance Coverage

All persons living in Switzerland for more than three months, including international students, must have basic health insurance coverage. Students from countries that provide international mutual health coverage may be exempted from compulsory health insurance. Other students may be exempted if they have equivalent health insurance coverage in their home country.

<sup>4</sup> Website: [www.eda.admin.ch/eda/en/home/rebs.html](http://www.eda.admin.ch/eda/en/home/rebs.html)



















# Degree Programmes

## Doctoral/Research Universities

Doctoral/Research Universities	BE	BS	ETHZ	FR	LU
Language of the institution	G	G	G	G	G

### Theology, Religious Studies

Science of Religion	B/M/SM	B/M/SM		B/M	B/M
Theology	B/M	B/M		B/M	B/M

### Law, Economics, Business Administration/Management

Business Administration	B/M/SM	B/M/SM	M	B/M	
Business Informatics				B/M	
Economics	B/M/SM	B/M/SM		B/M	B/M
Finance			SM	M	
Forensic Sciences					
Law	B/M	B/M		B/M	B/M
Professional Officer (of the Swiss Armed Forces)			B		

### Medicine, Nursing, Therapie

Applied Biosciences	M/SM		B/M/SM		
Dentistry	B/M	B/M		2	
Health Sciences		M	B		M
Human Medicine (incl. Chiropractic UZH)	B/M	B/M/SM		B/SM	
Nursing Sciences		M			
Pharmaceutical Sciences	2	B/M	B/M/SM	2	
Veterinary Medicine	B/M				

### Human Movement and Sports Sciences

Human Movement and Sports Sciences/Sport	B/M	B/M	B/M	B/M	
--	-----	-----	-----	-----	--

SG	ZH	USI	EPFL	FR	GE	LA	NE	UAS	UTE
G	G	I	F	F	F	F	F		

	B/M/SM			B/M	B/M	B/M			
	B/M			B/M	B/M	B/M	B/M	M	

B/M/SM	B/M	M	SM	B/M	B/M/SM	B/M	B/M	B/M	
	B/M			B/M	B	M	M	B/M	
B/M/SM	B/M	B/M		B/M	B/M/SM	B/M	B/M		
SM	B/M/SM	M	SM	M	M/SM	M	M	B	
						B/M			
B/M	B/M/SM			B/M	B/M/SM	B/M	B/M	B	

			M						
	B/M			2	B/M				
	B/M/SM			B/SM	B/M/SM	B/M	1		
						SM		B/M	
				2	B/M	1	1		
	B/M								

				B/M		B/M	Bq	B/M	B/M
--	--	--	--	-----	--	-----	----	-----	-----



Doctoral/Research Universities	BE	BS	ETHZ	FR	LU
Language of the institution	G	G	G	G	G

SG	ZH	USI	EPFL	FR	GE	LA	NE	UAS	UTE
G	G	I	F	F	F	F	F		

## Social Sciences

Education	B/M	M		B/M/SM	
Geography	B/M/SM	B/M	SM	B/M	
Political Science	B/M/SM	M	SM	M	B/M
Psychology	B/M	B/M		B/M	
Social and Cultural Anthropology	B/M	B/M		B/M	B/M
Social Work and Social Policy				B/M	
Sociology	B/M	B/M		B/M/SM	B/M
Special Education				B/M	

	B/M			B/M/SM	B/M	M	B/M		
	B/M/SM			B/M	B/M	B/M	B/M		
B/SM	B/M	M		M	B/M/SM	B/M	M		
	B/M			B/M	B/M	B/M	M	B/M	
	B/M/SM			B/M	SM	B/M	B/M/SM		
				B/M				B/M	
	B/M/SM			B/M/SM	B/M/SM	B/M	B/M		
	M			B/M	M/SM		B/M/SM	M	M

## Linguistics and Literary Studies, Communication

African Studies		M			
Ancient Near Eastern Studies	B	M			
Central Asian Studies	B/M				
Classical Philology	B/M	B/M		B/M	
Communication and Media Studies		B/M/SM		B/M	B/M
Comparative Literature	M	M		M	
East Asian Studies					
English Languages and Literatures	B/M	B/M		B/M	
French Language and Literature	B/M	B/M		B/M	
German Language and Literature	B/M	B/M		B/M	
Ibero-Romance Languages and Literatures	B/M	B/M		B/M	
Interpretation/Translation					
Islamic and Middle Eastern Studies	B/M	B/M			
Italian Language and Literature	B/M	B/M		B/M	

					B				
	B/M			B/M	B/M	B/M	B/M		
	B/M	B/M		B/M	SM		B/SM	B	
	B/M			M	B/M				
	B/M				B/M/SM				
	B/M			B/M	B/M	B/M	B/M		
	B/M			B/M	B/M	B/M	B/M		
	B/M			B/M	B/M	B/M	B/M		
					B/M/SM			B	
	B/M				B/M				
	B/M	B/M		B/M	B/M	B/M			

Doctoral/Research Universities	BE	BS	ETHZ	FR	LU
Language of the institution	G	G	G	G	G

### Linguistics and Literary Studies, Communication

Linguistics	B/M			M/SM	
Modern Greek Language and Literature					
Nordic Languages and Literatures		B/M			
Rhaeto-Romanic Language and Literature				B	
Slavonic Languages and Literatures	B/M	B/M		B/M	
South Asian Studies/Indian Studies					

### Historical and Cultural Sciences

African Studies		M			
Ancient Near Eastern Studies	B	M			
Archeology	B/M	B/M		M	
Art History	B/M	B/M		B/M	
Central Asian Studies	B/M				
East Asian Studies					
Egyptology		M			
History	B/M	B/M		B/M	B/M
History and Philosophy of Science	B/M		SM		M
Islamic and Middle Eastern Studies	B/M	B/M			
Musicology	B/M	B/M		B/M	
Philosophy	B/M	B/M		B/M	B/M
South Asian Studies/Indian Studies					
Theatre, Dance and Film Studies	B/M				

SG	ZH	USI	EPFL	FR	GE	LA	NE	UAS	UTE
G	G	I	F	F	F	F	F		

	B/M/SM			M/SM	B/M	B/M	B/M	M	
					B/M				
	B/M								
	B			B					
	B/M			B/M	B/M	B/M			
	B/M					B/M			

					B				
	B/M			M	B/M	B/M	B/M		
	B/M/SM			B/M	B/M	B/M	B/M		
	B/M				B/M/SM				
					B/M				
	B/M/SM			B/M	B/M	B/M	B/M		
	B/M				B/M				
	B/M			B/M	B/M				
	B/M			B/M	B/M	B/M	B/M		
	B/M					B/M			
	B/SM					B/M		B/M	

Doctoral/Research Universities	BE	BS	ETHZ	FR	LU
Language of the institution	G	G	G	G	G

SG	ZH	USI	EPFL	FR	GE	LA	NE	UAS	UTE
G	G	I	F	F	F	F	F		

### Mathematics, Computer Science

Business Informatics				B/M	
Communication Systems					
Computational Science and Engineering		B	B/M		
Computer Science	B/M	B/M	B/M/SM	B/M	
Mathematics	B/M	B/M	B/M/SM	B/M	

	B/M			B/M	B	M	M	B/M	
			B/M						
	SM		SM						
	B/M/SM	B/M	B/M	B/M	B/M	B/M	M	B	
	B/M		B/M/SM	B/M	B/M		B/M		

### Sciences and Earth Sciences

Agricultural Science			B/M		
Applied Biosciences	M/SM		B/M/SM		
Archeology	B/M	B/M		M	
Biochemistry	B		B/M	B/M	
Biology	B/M	B/M/SM	B/M/SM	B/M/SM	
Chemical Engineering			B/M		
Chemistry	B/M	B/M	B/M	B/M	
Earth Sciences	B/M	B/M	B/M/SM	B/M	
Environmental Sciences	B	SM	B/M	B	
Food Science			B/M		
Forensic Sciences					
Geography	B/M/SM	B/M	SM	B/M	
Life Sciences and Technologies	M/SM		B/M/SM		
Materials Science and Engineering			B/M		
Physics	B/M	B/M	B/M/SM	B/M	

								B/M	
			M						
	B/M			M	B/M	B/M	B/M		
	B/M			B/M	B/M				
	B/M/SM			B/M/SM	B/M	B/M	B/M		
			B/M						
	B/M/SM		B/M	B/M	B/M			B	
	B/M			B/M	B/M	B/M	M		
	SM			B	M	B/M	B		
						B/M			
	B/M/SM			B/M	B/M	B/M	B/M		
	SM		B/M					B/M	
			B/M						
	B/M/SM		B/M/SM	B/M	B/M				

Doctoral/Research Universities	BE	BS	ETHZ	FR	LU
Language of the institution	G	G	G	G	G

## Engineering

Agricultural Science			B/M		
Applied Biosciences	M/SM		B/M/SM		
Architecture			B/M/SM		
Chemical Engineering			B/M		
Civil Engineering			B/M		
Computational Science and Engineering		B	B/M		
Electrical Engineering			B/M		
Environmental and Geomatics Engineering			B/M		
Food Science			B/M		
Life Sciences and Technologies	M/SM		B/M/SM		
Materials Science and Engineering			B/M		
Mechanical Engineering			B/M/SM		
Micro Engineering			SM		

## Teaching, Educational Science

Education	B/M	M		B/M/SM	
Primary and Secondary School Teacher Education				M/T	M
Special Education				B/M	

SG	ZH	USI	EPFL	FR	GE	LA	NE	UAS	UTE
G	G	I	F	F	F	F	F		

								B/M	
			M						
		B/M	B/M					B/M	
			B/M						
			B/M					B/M	
			SM						
			B/M					B	
			B/M					B/M	
	SM		B/M					B/M	
			B/M						
			B/M					B	
			B/M					B	

	B/M			B/M/SM	B/M	M	B/M	M	
				M/T	B/M/SM			B/M	B/M/T
	M			B/M	M/SM		B/M/SM	M	M

# Universities of Applied Sciences and Arts

Universities of Applied Sciences and Arts	BFH	FHNW	FHO
Language of the institution	G	G	G

## Theology, Religious Studies

Theology			
----------	--	--	--

## Law, Economics, Business Administration/Management

Business Administration	B/M	B	B/M
Business Information Technology	B/M	B	M
Engineering and Management		B/M	B
Facility Management			
Finance	B	B	B
Hospitality Management			
Information Science			B
International Business Management		B/M	
Law, Business Law			
Tourism			B

## Medicine, Nursing, Therapy

Midwifery	B		
Nursing Sciences/Nursing	B/M		B/M
Nutrition and Dietetics	B		
Occupational Therapy			
Optometry		B	
Physiotherapy	B/M		
Radiology Medical Imaging Technology			

## Human Movement and Sports Sciences

Human Movement and Sports Sciences/Sports	B/M		
---	-----	--	--

## Social Sciences

Psychology		B/M	
Social Work	B/M	B/M	B/M

HES-SO	HSLU	SUPSI	ZFH	FH KAL	D/RU	UTE
F	G	I	G	G		

	M				B/M	
--	---	--	--	--	-----	--

B/M	B/M	B/M	B/M	B	B/M/SM	
B		B	B/M	B	B/M	
B/M	B/M	B	B/M			
			B/M			
B	M	B	M	B	B/M/SM	
B						
B/M						
B	B/M					
B			B/M	B	B/M/SM	
B						

B/M			B			
B/M		B	B/M	B/M	M/SM	
B		B				
B		B	B/M			
B		B	B/M			
B						

					B/M	B/M
--	--	--	--	--	-----	-----

			B/M		B/M	
B/M	B/M	B/M	B/M		B/M	

Universities of Applied Sciences and Arts	BFH	FHNW	FHO
Language of the institution	G	G	G

### Linguistics and Literary Studies, Communication

Communication and Media Studies			
Information Science			B
Interpretation/Translation			
Linguistics			
Literary Writing	B		
Media Engineering			B

### Historical and Cultural Sciences

Theatre, Dance and Film Studies			
---------------------------------	--	--	--

### Arts, Music, Design

Art and Design Education	B/M	B/M	
Conservation-Restoration	B/M		
Design, Product and Industrial Design, Visual Communication	B/M	B/M	
Fine Arts	B/M	B/M	
Music	B/M	B/M	
Music and Movement	B/M	B	
Theatre	B/M		

### Mathematics, Computer Science

Business Informatics	B	B/M	B
Computer Science	B	B	B

### Sciences and Earth Sciences

Agricultural Science	B/M		
Biotechnology			
Chemistry			
Food Technology	B		
Forestry, Wood Engineering	B/M		
Life Sciences and Technologies	M	B/M	

HES-SO	HSLU	SUPSI	ZFH	FH KAL	D/RU	UTE
F	G	I	G	G		

			B	B	B/M/SM	
B/M						
			B		B/M/SM	
			M		B/M/SM	
B						

M	B/M		B/M		B/M/SM	
---	-----	--	-----	--	--------	--

M	B/M		B/M			
B/M		B/M				
B/M	B/M	B	B/M	B		
B/M	B/M		B/M			
B/M	B/M	B/M	B/M	B		
B/M	B	B/M	B/M			
B/M		B/M	B/M			

B	B/M	B	B	B	B/M	
B	B	B	B		B/M/SM	

B			B		B/M	
			B			
B			B		B/M/SM	
			B			
B/M			M		B/M/SM	

Universities of Applied Sciences and Arts	BFH	FHNW	FHO
Language of the institution	G	G	G

HES-SO	HSLU	SUPSI	ZFH	FH KAL	D/RU	UTE
F	G	I	G	G		

### Sciences and Earth Sciences

Molecular Life Science		B	
Oenology			

B						

### Engineering

Architecture	B/M	B/M	
Automobile Engineering	B		
Aviation			
Civil Engineering	B/M	B/M	B/M
Electrical Engineering	B	B	B
Engineering	M	M	M
Engineering and Building Technology			
Engineering and Management		B	B
Environmental and Geomatics Engineering		B	B
Industrial Design Engineering			
Interior Design		B	
Landscape Architecture			B
Mechanical Engineering	B	B	B
Media Engineering			B
Medical Informatics	B		
Micro Engineering	B		
Spatial Planning			B
Systems Engineering		B	B
Telecommunications			
Transportation Systems			

B/M	B/M	B	B/M		B/M/SM	
			B			
B	B/M	B	B/M		B/M	
B	B	B	B		B/M	
M	M	M	M			
B	B					
B	B	B	B			
B/M			B		B/M	
B						
B	B	B				
B						
B	B	B	B		B/M/SM	
B						
B					B/M/SM	
B			B			
B						
			B			

### Teaching, Educational Science

Educational Sciences		M	
Pre-Primary Education		B	
Primary Education		B	
Secondary I Education		B/M	
Secondary II Education		T	
Special Needs Education		M	

					B/M/SM	
		B	B			B
		B	B		B/M	B
		M	B/M		M/SM	M
		T			T	T
			M		B/M/SM	M



# Universities of Teacher Education \*

Universities of Teacher Education	PHBern	PH VS/ HEP VS	PH FHNW	PHGR/ ASPGR/ SAPGR
Language of the institution	G	G/F	G	G/I/RM

PH FR/ HEP FR	Uni FR/ LDS I & LDM	UNIGE/ IUFE	PHTG	HEP Vaud	SUPSI- DFA	UAS	D/RU
G/F	G/F	F	G	F	I		

## Human Movement and Sports Sciences

Human Movement and Sports Sciences/Sport				
--	--	--	--	--

						B/M	B/M
--	--	--	--	--	--	-----	-----

## Teaching, Educational Science

Education Programme for Vocational Trainers in Industry-Wide Courses and Apprentice Workshops				
Other BA/ MA			M	M
Pre-Primary and Primary Education (-2/+2 -2/+3)			B	
Pre-Primary and Primary Education (-2/+6)	B	B		
Pre-Primary Education (-2/-1)				B
Primary Education (+1/+6)			B	B
Psychomotor Therapy				
Secondary Education Level I	M	M	M	
Secondary Education Level I & II (Teacher at secondary and matura certificate level)		T		
Secondary Education Level II (Teacher at matura certificate level)	T	T	T	
Special Needs Education	M	M	M	
Speech and Language Therapy			B	
Study course for general education in vocational schools				
Study course for specialised vocational teaching				
Study course for teaching vocational baccalaureate subjects	T <sup>2</sup>		T	
Study course for teacher at PET colleges				
Subject-Specific Didactics	M		M	
Special Education				

		M	M	M			B/M/SM
B		B		B			
			B		B	B	
			B		B	B	B/M
	M		M	M	M	M	M/SM
		T					
	T		T	T	T	T	T
		M		M			B/M/SM
		M					B/SM
	T <sup>2</sup>		T <sup>2</sup>	T <sup>2</sup>			
M	M	M		M		M	M/SM
						M	B/M/SM

<sup>1</sup> for persons not qualified to teach at academic baccalaureate level

<sup>2</sup> with SFIVET

\*All the training programmes leading to teaching at the compulsory school level are awarded by a teaching diploma and an academic diploma (bachelor/master). More information under [www.edk.ch/dyn/13870.php](http://www.edk.ch/dyn/13870.php)

Universities of Teacher Education	PH Zug	PH LU	PHSZ	HEP BEJUNE
Language of the institution	G	G	G	F

PHSH	PHSG	PH Zürich	HfH	EHB/ IFFP/ IUFPF/ SFIVET	EHSM/ HEFSM/ SUFSM	UAS	D/RU
G	G	G	G	G/F/I	D/F		

## Human Movement and Sports Sciences

Human Movement and Sports Sciences/Sport				
--	--	--	--	--

					B/M	B/M	B/M
--	--	--	--	--	-----	-----	-----

## Teaching, Educational Science

Education Programme for Vocational Trainers in Industry-Wide Courses and Apprentice Workshops				
Other BA/MA				
Pre-Primary and Primary Education (-2/+2 -2/+3)	B	B	B	
Pre-Primary and Primary Education (-2/+6)				B
Pre-Primary Education (-2/-1)				
Primary Education (+1/+6)	B	B	B	
Psychomotor Therapy				
Secondary Education Level I		M		M
Secondary Education Level I+II (Teacher at secondary and matura certificate level)				T
Secondary Education Level II (Teacher at matura certificate level)		T		T
Special Needs Education		M		M
Speech and Language Therapy				
Study course for general education in vocational schools				
Study course for specialised vocational teaching		T <sup>(1)</sup>		
Study course for teaching vocational baccalaureate subjects		T <sup>1</sup> /T		T <sup>2</sup>
Study course for teacher at PET colleges		T <sup>(1)</sup>		
Subject-Specific Didactics				
Special Education				

	T	T <sup>(pt)</sup>		T			
	M			M	B/M		B/M/SM
	B	B					
B		B				B	
B	B	B				B	B/M
			B				
	M	M				M	M/SM
					T	T	T
	SM		M				B/M/SM
			B				B/SM
	T	T		T			
	T <sup>(1)</sup>	T		T			
		T/T <sup>1</sup>		T			
	T	T <sup>(pt)</sup>		T			
		M				M	M/SM
			M			M	B/M/SM

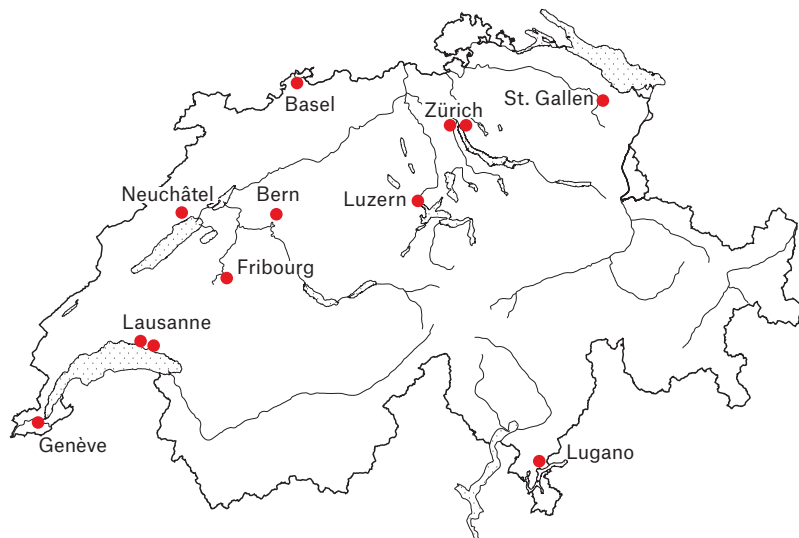
<sup>1</sup> for persons not qualified to teach at academic baccalaureate level

<sup>2</sup> with SFIVET

\*All the training programmes leading to teaching at the compulsory school level are awarded by a teaching diploma and an academic diploma (bachelor/master). More information under [www.edk.ch/dyn/13870.php](http://www.edk.ch/dyn/13870.php)

## Universities

### Doctoral/Research Universities



<p><b>Universität Basel</b></p> <p>Studiensekretariat Petersplatz 1 4003 Basel T +41 (0)61 267 30 23 www.unibas.ch/studseksupport www.unibas.ch</p>	<p>Faculties</p> <ul style="list-style-type: none"> <li>· Theology</li> <li>· Law</li> <li>· Medicine</li> <li>· Humanities</li> <li>· Science</li> <li>· Business and Economics</li> <li>· Psychology</li> </ul>	<p><b>a</b> 13 265</p> <p><b>b</b> 27%</p> <p><b>c</b> 850</p>
---	---	--

<p><b>Universität Bern</b></p> <p>Abteilung Zulassung, Immatrikulation und Beratung ZIB Hochschulstrasse 4 3012 Bern T +41 (0)31 631 39 11 info@zib.unibe.ch www.unibe.ch</p>	<p>Faculties</p> <ul style="list-style-type: none"> <li>· Theology</li> <li>· Law</li> <li>· Business, Economics and Social Sciences</li> <li>· Medicine</li> <li>· Vetsuisse (Veterinary Medicine)</li> <li>· Humanities</li> <li>· Human Sciences</li> <li>· Science</li> </ul>	<p><b>a</b> 16 238</p> <p><b>b</b> 18%</p> <p><b>c</b> 784</p>
---	---	--

<p><b>Université de Fribourg</b> <b>Universität Freiburg</b></p> <p>Service d'admission et d'inscription Rue de Rome 1 1700 Fribourg T +41 (0)26 300 70 20 www.unifr.ch/admission/de/contact www.unifr.ch</p>	<p>Faculties</p> <ul style="list-style-type: none"> <li>· Theology</li> <li>· Law</li> <li>· Economics and Social Sciences</li> <li>· Arts and Humanities</li> <li>· Science</li> </ul>	<p><b>a</b> 10 362</p> <p><b>b</b> 20%</p> <p><b>d</b> 655</p> <p><b>e</b> 805</p>
---	---	--

<p><b>Université de Genève</b></p> <p>Service des admissions Rue Général Dufour 24 1211 Genève 4 T +41 (0)22 379 71 11 immat@unige.ch www.unige.ch</p>	<p>Faculties</p> <ul style="list-style-type: none"> <li>· Science</li> <li>· Medicine</li> <li>· Humanities</li> <li>· Law</li> <li>· Protestant Theology</li> <li>· Psychology and Educational Sciences</li> <li>· Economics and Management</li> <li>· Social Sciences</li> <li>· Translation and Interpreting</li> </ul>	<p><b>a</b> 15 776</p> <p><b>b</b> 40%</p> <p><b>c</b> 500</p>
--	--	--

<p><b>Ecole Polytechnique</b> <b>Fédérale de Lausanne</b></p> <p>Délégation à la formation Service académique BP-1 233 (Bâtiment BP) Station 16 1015 Lausanne T +41 (0)21 693 43 45 sac@epfl.ch www.epfl.ch</p>	<p>Schools and Colleges</p> <ul style="list-style-type: none"> <li>· Basic Sciences</li> <li>· Engineering</li> <li>· Architecture, Civil and Environmental Engineering</li> <li>· Computer and Communication Sciences</li> <li>· Life Sciences</li> <li>· Management of Technology</li> <li>· Humanities</li> </ul>	<p><b>a</b> 9 634</p> <p><b>b</b> 53%</p> <p><b>c</b> 633</p>
---	--	---

<p><b>Université de Lausanne</b></p> <p>Service des immatriculations et inscriptions Unicentre 1015 Lausanne T +41 (0)21 692 21 00 immat.bachelor@unil.ch www.unil.ch</p>	<p>Faculties</p> <ul style="list-style-type: none"> <li>· Theology and Religious Studies</li> <li>· Law, Criminal Justice and Public Administration</li> <li>· Arts</li> <li>· Social and Political Sciences</li> <li>· Business and Economics</li> <li>· Geosciences and Environment</li> <li>· Biology and Medicine</li> </ul>	<p><b>a</b> 13 624</p> <p><b>b</b> 27%</p> <p><b>c</b> 580</p>
---	--	--

- <sup>a</sup> Number of students (2013)
- <sup>b</sup> International students (2013)
- <sup>c</sup> Tuition fees/semester in CHF (2014/2015)
- <sup>d</sup> Tuition fees/semester for Swiss students in CHF (2014/2015)
- <sup>e</sup> Tuition fees/semester for international students in CHF (2014/2015)

<b>Universität Luzern</b>	Faculties	<b>a 2 754</b>
Studiendienste/Zulassung Frohburgstrasse 3 Postfach 4466 6002 Luzern T +41 (0)41 229 50 00 zulassung@unilu.ch www.unilu.ch	· Theology	<b>b 14%</b>
	· Humanities and Social Sciences	<b>d 810</b>
	· Law	<b>e 1110</b>

<b>Università della Svizzera italiana</b>	Faculties	<b>a 3 012</b>
Segreteria generale Via Lambertenghi 10A 6904 Lugano T +41 (0)58 666 46 11 info@usi.ch www.usi.ch	· Architecture	<b>b 69%</b>
	· Communication Sciences	<b>d 2 000</b>
	· Economics	<b>e 4 000</b>
	· Informatics	
	· Italian Studies	

<b>Université de Neuchâtel</b>	Faculties	<b>a 4 279</b>
Service Immatriculation Av. du 1er-Mars 26 2000 Neuchâtel T +41 (0)32 718 10 00 immatriculation@unine.ch www.unine.ch	· Humanities	<b>b 24%</b>
	· Science	<b>d 515</b>
	· Law	<b>e 790</b>
	· Economics and Business	
	· Theology	

<b>Universität St. Gallen</b>	Schools	<b>a 8 193</b>
Zulassungs- und Anrechnungsstelle Dufourstrasse 50 9000 St. Gallen T +41 (0)71 224 39 31 zulassung@unisg.ch www.unisg.ch	· Management	<b>b 36%</b>
	· Economics and Political Science	<b>d 1 226</b>
	· Law	(1426 for Master's programmes)
	· Finance	<b>e 3 126</b>
	· Humanities and Social Sciences	(3326 for Master's programmes)

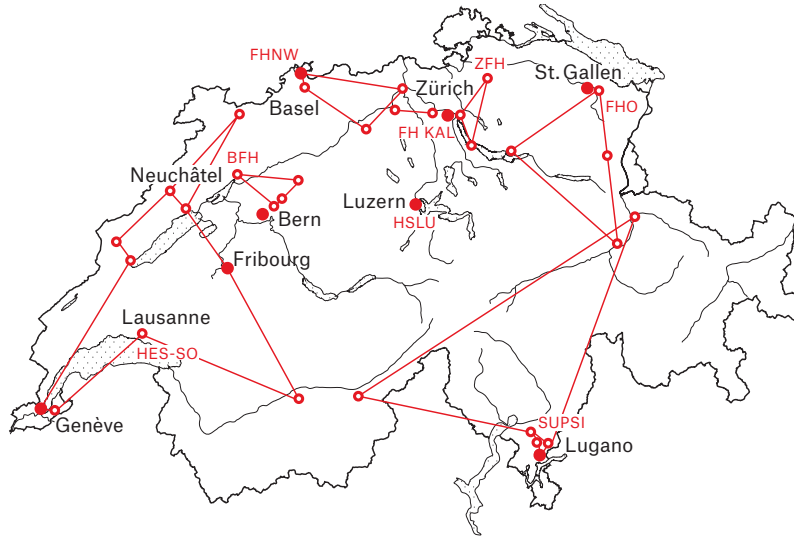
<b>Eidgenössische Technische Hochschule Zürich</b>	Departments	<b>a 17 682</b>
Zulassungsstelle HG F 21.3-4 Rämistrasse 101 8092 Zürich T (Bachelor) +41 (0)44 632 56 53 +41 (0)44 632 54 10 T (Master) +41 (0)44 632 81 00 zulassungsstelle@ethz.ch and master@ethz.ch www.ethz.ch	· Architecture	<b>b 36%</b>
	· Civil, Environmental and Geomatic Engineering	<b>c 644</b>
	· Biosystems Science and Engineering	
	· Computer Science	
	· Information Technology and Electrical Engineering	
	· Mechanical and Process Engineering	
	· Materials Science	
	· Biology	
	· Chemistry and Applied Biosciences	
	· Mathematics	
	· Physics	
	· Earth Sciences	
	· Environmental Systems Science	
	· Health Sciences and Technology	
	· Management, Technology and Economics	
	· Humanities, Social and Political Sciences	

<b>Universität Zürich</b>	Faculties	<b>a 26 357</b>
Abteilung Studierende Zulassungsstelle Rämistrasse 71 8006 Zürich T +41 (0)44 634 22 36 admission@uzh.ch www.uzh.ch	· Theology	<b>b 18%</b>
	· Law	<b>d 769</b>
	· Economics, Business Administration and Information Technology	<b>e 1 269</b>
	· Medicine	
	· Vetsuisse (Veterinary Medicine)	
	· Arts	
	· Science	

- <sup>a</sup> Number of students (2013)
- <sup>b</sup> International students (2013)
- <sup>c</sup> Tuition fees/semester in CHF (2014/2015)
- <sup>d</sup> Tuition fees/semester for Swiss students in CHF (2014/2015)
- <sup>e</sup> Tuition fees/semester for international students in CHF (2014/2015)

All statistical details provided in this brochure are from the Swiss Federal Statistical Office (<http://www.bfs.admin.ch>).

# Universities of Applied Sciences and Arts



<p><b>Berner Fachhochschule (BFH)</b></p> <p>Falkenplatz 24 3012 Bern www.bfh.ch/international</p>	<p>Departments</p> <ul style="list-style-type: none"> <li>· Engineering and Information Technology</li> <li>· Architecture, Wood and Civil Engineering</li> <li>· Business and Administration, Health, Social Work</li> <li>· School of Agricultural, Forest and Food Sciences</li> <li>· Bern University of the Arts</li> <li>· Swiss Federal Institute of Sports Magglingen</li> </ul>	<p><b>a 6 831</b></p> <p><b>b 12%</b></p> <p><b>c 750</b></p>
--	--	---

<p><b>Fachhochschule Nordwestschweiz (FHNW)</b></p> <p>Bahnhofstrasse 6 5210 Windisch www.fhnw.ch/international</p>	<p>Departments</p> <ul style="list-style-type: none"> <li>· FHNW School of Applied Psychology</li> <li>· FHNW School of Business</li> <li>· FHNW School of Education</li> <li>· FHNW School of Engineering</li> <li>· FHNW School of Life Sciences</li> <li>· FHNW School of Social Work</li> <li>· FHNW Academy of Art and Design</li> <li>· FHNW School of Architecture, Civil Engineering and Geomatics</li> <li>· FHNW Academy of Music</li> </ul>	<p><b>a 11 278</b></p> <p><b>b 19%</b></p> <p><b>d 700</b></p> <p><b>e 5 000</b></p>
---	--	--

<p><b>Fachhochschule Ostschweiz (FHO)</b></p> <p>Bogenstrasse 7 9000 St. Gallen www.fho.ch</p>	<p>Affiliated Universities</p> <ul style="list-style-type: none"> <li>· Hochschule für Technik Rapperswil (HSR)</li> <li>· Hochschule für Angewandte Wissenschaften (FHS St. Gallen)</li> <li>· Hochschule für Technik und Wirtschaft Chur (HTW)</li> <li>· Interstaatliche Hochschule für Technik Buchs (NTB)</li> </ul>	<p><b>a 5 282</b></p> <p><b>b 13%</b></p> <p><b>d 1 000</b></p> <p><b>e 1 920–10 000</b></p>
--	---	--

<p><b>Haute Ecole Spécialisée de Suisse occidentale (HES-SO)</b></p> <p>Rue de la Jeunesse 1 Case postale 452 2800 Delémont 1 www.hes-so.ch/international</p>	<p>Affiliated Universities</p> <ul style="list-style-type: none"> <li>· HES-SO Arc</li> <li>· HES-SO Fribourg</li> <li>· HES-SO Genf</li> <li>· HES-SO Valais Wallis</li> <li>· Haute Ecole Vaudoise</li> <li>· Hautes écoles conventionnées</li> <li>· HES-SO//Master</li> </ul>	<p><b>a 18 737</b></p> <p><b>b 26%</b></p> <p><b>d 500</b></p> <p><b>e 500</b> (CHF 14 000 Ecole hôtelière Lausanne)</p>
---	---	--

<p><b>Hochschule Luzern (HSLU)</b></p> <p>Werftstrasse 4 Postfach 2969 6002 Luzern www.hslu.ch/international</p>	<p>Departments</p> <ul style="list-style-type: none"> <li>· Engineering and Architecture</li> <li>· Business</li> <li>· Information Technology</li> <li>· Social Work</li> <li>· Art and Design</li> <li>· Music</li> </ul>	<p><b>a 6 669</b></p> <p><b>b 12%</b></p> <p><b>c 800</b></p>
--	---	---

<p><b>Kalaidos Fachhochschule Schweiz (FH KAL)</b></p> <p>Jungholzstrasse 43 8050 Zürich www.kalaidos-fh.ch</p>	<p>Departments</p> <ul style="list-style-type: none"> <li>· Business</li> <li>· Health</li> <li>· Music</li> </ul>	<p><b>a 1 750</b></p> <p><b>b 13%</b></p> <p><b>c 3 600–10 270</b></p>
---	--	--

<sup>a</sup> Number of students (2013)  
<sup>b</sup> International students (2013)  
<sup>c</sup> Tuition fees/semester in CHF (2014/2015)  
<sup>d</sup> Tuition fees/semester for Swiss students in CHF (2014/2015)  
<sup>e</sup> Tuition fees/semester for international students in CHF (2014/2015)

**Scuola Universitaria  
Professionale della Svizzera  
Italiana (SUPSI)**

Direzione generale  
Le Gerre  
6928 Manno  
www.supsi.ch/international

- Affiliated Universities
- Conservatorio della Svizzera italiana
  - Fernfachhochschule Schweiz
  - Scuola Teatro Dimitri

**a** 4 522  
**b** 32%  
**d** 750–1 000  
**e** 800–1 600

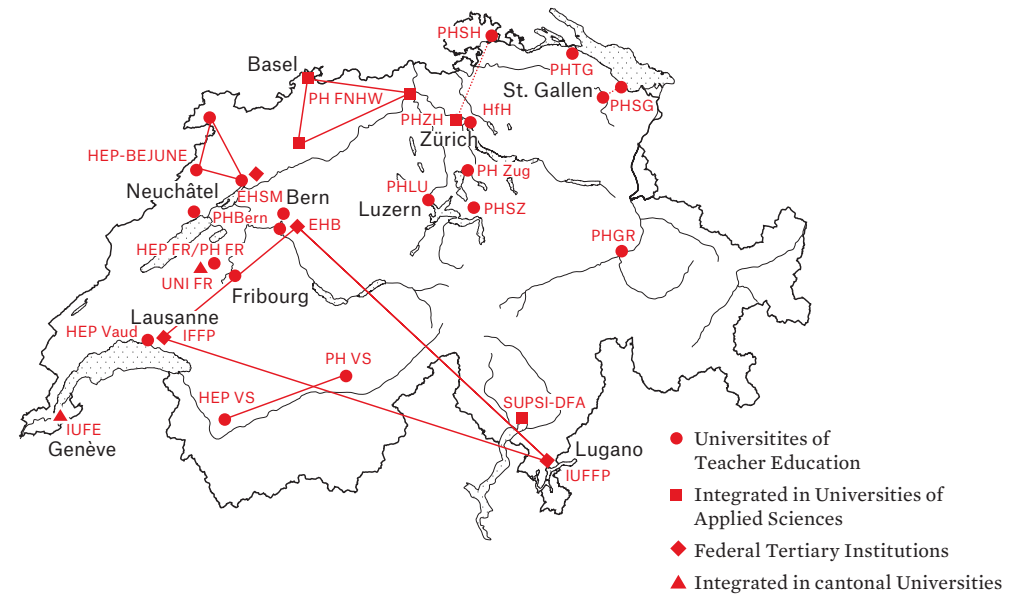
**Zürcher Fachhochschule (ZFH)**

Walcheplatz 2  
Postfach  
8090 Zürich  
www.zhaw.ch/international  
www.zhdk.ch/international

- Affiliated Universities
- Zurich University of Applied Sciences ZHAW
  - Zurich University of the Arts ZHdK
  - Zurich University of Teacher Education PHZH
  - University of Applied Sciences in Business Administration Zurich HWZ

**a** 19 734  
**b** 12%  
**d** 720  
**e** 1 220

Universities of Teacher Education



**PHBern, deutschsprachige  
Pädagogische Hochschule**

Fabrikstrasse 8  
3012 Bern  
T +41 (0)31 309 21 15  
studierende@phbern.ch  
www.phbern.ch

- Teaching areas
- Pre-primary and Primary Teacher Education (-2/+2), (-2/+3), (-2/+6)
  - Secondary I Teacher Education
  - Secondary II Teacher Education
  - Special Needs Education

**a** 2 296  
**b** 4%  
**c** 795

**Pädagogische Hochschule  
Wallis (PH VS)**

**Haute école pédagogique  
du Valais (HEP VS)**

Alte Simplonstrasse 33  
3900 Brig  
T +41 (0)27 606 96 50  
brig@phvs.ch  
www.hepvs.ch

Avenue du Simplon 13  
1890 St-Maurice  
T +41 (0)27 606 96 00  
st-maurice@hepvs.ch  
www.phvs.ch

- Teaching areas
- Pre-primary and Primary Teacher Education (-2/+6)
  - Secondary I Teacher Education
  - Secondary II Teacher Education
  - Special Needs Education

**a** 429  
**b** 7.7%  
**c** 500–700

<sup>a</sup> Number of students (2013)  
<sup>b</sup> International students (2013)  
<sup>c</sup> Tuition fees/semester in CHF (2014/2015)  
<sup>d</sup> Tuition fees/semester for Swiss students in CHF (2014/2015)  
<sup>e</sup> Tuition fees/semester for international students in CHF (2014/2015)

All statistical details provided in this brochure are from the Swiss Federal Statistical Office (<http://www.bfs.admin.ch>).

**Pädagogische Hochschule der Fachhochschule Nordwestschweiz (PH FHNW)**

Baslerstrasse 43  
5201 Brugg  
T +41 (0)84 801 22 10  
info.ph@fhnw.ch  
www.fhnw.ch/ph

Teaching areas

- Pre-primary and Primary Teacher Education (-2/+2), (-2/+3), (-2/+6)
- Primary Teacher Education (+1/+6)
- Secondary I Teacher Education
- Secondary II Teacher Education
- Special Needs Education
- Speech and Language Therapy
- Subject-Specific Didactics
- Educational science
- Vocational training

**a** 2 646  
**b** 13.5%  
**c** 700

**Pädagogische Hochschule Graubünden (PHGR)**

**Alta scuola pedagogica dei Grigioni (ASPGR)**

**Scola auta da pedagogia dal Grischun (SAPGR)**

Scalärastrasse 17  
7000 Chur  
T +41 (0)81 354 03 02  
info@phgr.ch  
www.phgr.ch

Teaching areas

- Pre-primary Education (-2/-1)
- Primary Education (+1/+6)

**a** 398  
**b** 5.5%  
**c** 500

**Haute école pédagogique Fribourg (HEP-PH FR)**

**Pädagogische Hochschule Freiburg (HEP-PH FR)**

Rue de Morat 36  
1700 Fribourg  
T +41 (0)26 305 71 11  
info@hepfr.ch  
mobility@hepfr.ch  
www.phfr.ch  
www.hepfr.ch

Teaching areas

- Pre-primary and Primary Teacher Education (-2/+6)
- Subject-Specific Didactics

**a** 443  
**b** 7.7%  
**d** 600  
**e** 4 200

**Universität Freiburg, Departement Erziehungswissenschaften**

**Université de Fribourg département de la formation d'enseignantes et d'enseignants (Uni FR LDS I & LDM)**

Rue P.-A. de Faucigny 2  
1700 Fribourg

German section:  
Sek I T +41 (0)26 300 75 90  
lds1@unifr.ch  
Sek II T +41 (0)26 300 75 76  
lds2@unifr.ch  
www.unifr.ch/lb

French section :  
Sek I + II T +41 (0)26 300 76 00  
cerf@unifr.ch  
lettres.unifr.ch/fr/centres/cerf

Teaching areas

- Secondary I Teacher Education
- Secondary II Teacher Education
- Special Needs Education
- Educational science

**a** 328  
**b** 7%  
**d** 655  
**e** 805

**Pädagogische Hochschule Thurgau (PHTG)**

Unterer Schulweg 3  
8280 Kreuzlingen  
T +41 (0)71 678 56 56  
internationaloffice@phtg.ch  
www.phtg.ch

Teaching areas

- Early Childhood Education
- Pre-primary Education (-2/-1)
- Primary Education (+1/+6)
- Secondary I Teacher Education
- Secondary II Teacher Education

**a** 760  
**b** 31%  
**c** 700  
(900 for Early Childhood Education)

**Institut Universitaire de Formation des Enseignants (Uni GE IUFE)**

Pavillon Mail  
Bd. du Pont-d'Arve 40  
1211 Genève 4  
T +41 (0)22 379 04 01  
iufe@unige.ch  
www.unige.ch/iufe

Teaching areas

- Pre-primary and Primary Teacher Education (-2/+6)
- Primary Teacher Education
- Secondary I + II Teacher Education
- Special Needs Education
- Subject-Specific Didactics

**a** 455  
**b** 26%  
**c** 500

- <sup>a</sup> Number of students (2013)  
<sup>b</sup> International students (2013)  
<sup>c</sup> Tuition fees/semester in CHF (2014/15)  
<sup>d</sup> Tuition fees/semester for Swiss students in CHF (2014/15)  
<sup>e</sup> Tuition fees/semester for international students in CHF (2014/15)



---

**Haute école pédagogique du canton de Vaud (HEP Vaud)**

Avenue de Cour 33  
1014 Lausanne  
T +41 (0)21 316 92 70  
accueil@hepl.ch  
www.hepl.ch

Teaching areas:  
· Pre-primary and Primary Teacher Education (-2/+6)  
· Secondary I Teacher Education  
· Secondary II Teacher Education  
· Special Needs Education  
· Subject-Specific Didactics  
· Sciences and Practice of Education

**a 1 690**  
**b 12%**  
**c 400**

---

**Scuola universitaria professionale della Svizzera italiana, Dipartimento formazione e apprendimento (SUPSI-DFA)**

Piazza San Francesco 19  
6600 Locarno  
T +41(0)58 666 68 00  
dfa@supsi.ch  
www.supsi.ch/dfa

Teaching areas:  
· Pre-primary Education (-3/-1)  
· Primary Education (+1/+5)  
· Secondary I Teacher Education  
· Secondary II Teacher Education

**a 341**  
**b 15.5%**  
**c 800**  
**e 1 600**  
(For international students residing in another country)

---

**Pädagogische Hochschule Luzern (PHLU)**

Pfistergasse 20  
Postfach 7660  
6000 Luzern 7  
T +41 (0)41 228 71 11  
info@phlu.ch  
www.phlu.ch

Teaching areas:  
· Pre-primary and Primary Teacher Education (-2/+2), (-2/+3), (-2/+6)  
· Primary Education (+1/+6)  
· Secondary I Teacher Education  
· Secondary II Teacher Education  
· Special Needs Education  
· Vocational Training

**a 1 954**  
**b 6.4%**  
**c 695**

---

**Pädagogische Hochschule Schwyz (PHSZ)**

Zaystrasse 42  
6410 Goldau  
T +41 41 859 05 90  
info@phsz.ch  
www.phsz.ch

Teaching areas:  
· Pre-primary and Primary Teacher Education (-2/+2), (-2/+3), (-2/+6)  
· Primary Education (+1/+6)

**a 277**  
**b 5.4%**  
**c 650**  
(plus cost-covering charges for international students)

---

**Pädagogische Hochschule Zug (PH Zug)**

Zugerbergstrasse 3  
6301 Zug  
T +41 41 727 12 40  
info@phzg.ch  
international@phzg.ch  
www.phzg.ch

Teaching areas:  
· Pre-primary and Primary Teacher Education (-2/+2)  
· Primary Education (+1/+6)

**a 309**  
**b 7.8%**  
**c 650**

---

**Haute école pédagogique - BEJUNE (HEP-BEJUNE)**

Rue du Banné 23  
2900 Porrentruy  
T +41 (0)84 488 69 96  
rectorat@hep-bejune.ch  
www.hep-bejune.ch

Teaching areas:  
· Pre-primary and Primary Teacher Education (-2/+6)  
· Secondary I Teacher Education  
· Secondary II Teacher Education  
· Secondary I + II Teacher Education  
· Special Needs Education

**a 603**  
**b 10%**  
**d 500**  
**e 1 000**

---

**Pädagogische Hochschule Schaffhausen (PHSH)**

Ebnatstrasse 80  
8200 Schaffhausen  
T +41 (0)43 305 49 00  
sekretariat@phsh.ch  
www.phsh.ch

Teaching areas:  
· Pre-primary Education (-2/-1)  
· Primary Education (+1/+6)

**a 165**  
**b 12.7%**  
**c 680**

---

**Pädagogische Hochschule St. Gallen (PHSG)**

Notkerstrasse 27  
9000 St. Gallen  
T +41 (0)71 243 94 00  
info@phsg.ch  
www.phsg.ch

Teaching areas:  
· Pre-primary and Primary Teacher Education (-2/+3)  
· Primary Education (+1/+6)  
· Secondary I Teacher Education  
· Secondary II Vocational Teacher Education  
· Early Childhood Studies  
· Special Need Education

**a 1 185**  
**b 9.3%**  
**c 800**

---

**Pädagogische Hochschule Zürich (PH Zürich)**

Lagerstrasse 2  
8090 Zürich  
T +41 (0)43 305 55 55  
info@phzh.ch  
www.phzh.ch

Teaching areas:  
· Pre-primary Education (-2/-1)  
· Pre-primary and Primary Teacher Education (-2/+3)  
· Primary Education (+1/+6)  
· Secondary I Teacher Education  
· Subject-Specific Didactics  
· Vocational Training

**a 3 222**  
**b 9.4%**  
**d 720**  
**e 1 220**

**a** Number of students (2013)  
**b** International students (2013)  
**c** Tuition fees/semester in CHF (2014/2015)  
**d** Tuition fees/semester for Swiss students in CHF (2014/2015)  
**e** Tuition fees/semester for international students in CHF (2014/2015)

All statistical details provided in this brochure are from the Swiss Federal Statistical Office (<http://www.bfs.admin.ch>).

---

**Interkantonale Hochschule für Heilpädagogik Zürich (HfH)**

Schaffhauserstrasse 239  
Postfach 5850  
8050 Zürich  
T +41 (0)44 317 11 11  
kontaktinfo@hfh.ch  
www.hfh.ch

- Teaching areas:
- Special Needs Education
  - Speech and Language Therapy
  - Psychomotor Therapy
  - Sign Language Interpreting

**a** 1025  
**b** 0.4%  
**c** 900 to 925  
(full time) CHF 750  
(part-time)

---

**Eidgenössisches Hochschulinstitut für Berufsbildung (EHB)****Institut fédéral des hautes études en formation professionnelle (IFFP)****Istituto universitario federale per la formazione professionale (IUFPF)**

Kirchlindachstrasse 79  
3052 Zollikofen  
T +41 (0)31 910 37 00  
info@ehb-schweiz.ch  
www.ehb-schweiz.ch

- Teaching areas:
- Vocational Education and Training
  - Study course for general education in vocational schools
  - Study course for specialised vocational teaching
  - Study course for teaching vocational baccalaureate subjects
  - Study course for teacher at PET colleges

**a** 575  
**b** 6.4%  
**c** 600

---

**Eidgenössische Hochschule für Sport Magglingen (EHSM)****Haute école fédérale de sport de Macolin (HEFSM)****Scuola universitaria federale dello sport di Macolin (SUFSM)**

2532 Magglingen  
T +41 (0)58 467 62 26  
ehsm@baspo.admin.ch  
www.ehsm.ch

- Teaching areas:
- Physical Education and Sports
  - Sport and Performance
  - Sports Management
  - Sports Science, Specialisation in Physical Education
  - Sports Science, Specialisation in Sports Education at Vocational Schools

**a** 287  
**b** 3%  
**d** 900  
**e** 2000

---

## Educational Bodies

---

**swissuniversities****Rector's Conference of Swiss Universities****Rektorenkonferenz der schweizerischen Hochschulen****Conférence des recteurs des hautes écoles suisses**

Effingerstrasse 15  
P.O. Box  
3000 Bern 1  
T +41 (0)31 335 07 40  
www.swissuniversities.ch

---

**AAQ****Swiss Agency of Accreditation and Quality Assurance****Schweizerische Agentur für Akkreditierung und Qualitätssicherung****Agence suisse d'accréditation et d'assurance qualité**

Effingerstrasse 15  
P.O. Box  
3000 Bern 1  
T +41 (0)31 380 11 50  
info@aaq.ch  
www.aaq.ch

---

**SBFI****State Secretariat for Education, Research and Innovation SERI****Staatssekretariat für Bildung, Forschung und Innovation SBFI****Secrétariat d'Etat à la formation, à la recherche et à l'innovation SEFRI**

Einsteinstrasse 2  
3003 Bern  
T +41 (0)58 462 21 29  
info@sbfi.admin.ch  
www.sbfi.admin.ch

---

**SHK****Swiss Conference of Higher Education Institutions****Schweizerische Hochschulkonferenz SHK****Conférence suisse des hautes écoles CHSE**

Einsteinstrasse 2  
3003 Bern  
T +41 (0)58 462 88 11  
geschaeftsstelle.shk@sbfi.admin.ch  
www.shk.ch

## **SNF**

---

**Swiss National Science Foundation SNSF**

**Schweizerischer Nationalfonds SNF**

**Fonds national suisse FNS**

Wildhainweg 3  
P.O. Box 8232  
3001 Bern  
T +41 (0)31 308 22 22  
com@snf.ch  
www.snf.ch

## **KTI**

---

**Commission for Technology and Innovation CTI**

**Kommission für Technologie und Innovation KTI**

**Commission pour la technologie et l'innovation CTI**

Einsteinstrasse 2  
3003 Bern  
T +41 (0)58 462 21 29  
info@kti.admin.ch  
www.kti.admin.ch

## **SWIR**

---

**Swiss Science and Innovation Council SSIC**

**Schweizerische Wissenschafts- und Innovationsrat SWIR**

**Conseil suisse de la science et de l'innovation CSSI**

Einsteinstrasse 2  
3003 Bern  
T +41 (0)58 463 00 48  
swir@swir.admin.ch  
www.swir.ch

## **EDK**

---

**Swiss Conference of Cantonal Ministers of Education**

**Schweizerische Konferenz der kantonalen Erziehungsdirektoren EDK**

**Conférence suisse des directeurs cantonaux de l'instruction publique CDIP**

Haus der Kantone  
Speichergasse 6  
P.O. Box  
3000 Bern 7  
T +41 (0)31 309 51 11  
edk@edk.ch  
www.edk.ch

## **ch Stiftung**

---

**ch Foundation for Federal Cooperation**

**ch Stiftung für eidgenössische Zusammenarbeit**

**Fondation ch pour la collaboration confédérale**

Dornacherstrasse 28A  
P.O. Box 246  
4501 Solothurn  
T +41 (0)32 346 18 00  
info@chstiftung.ch  
www.chstiftung.ch